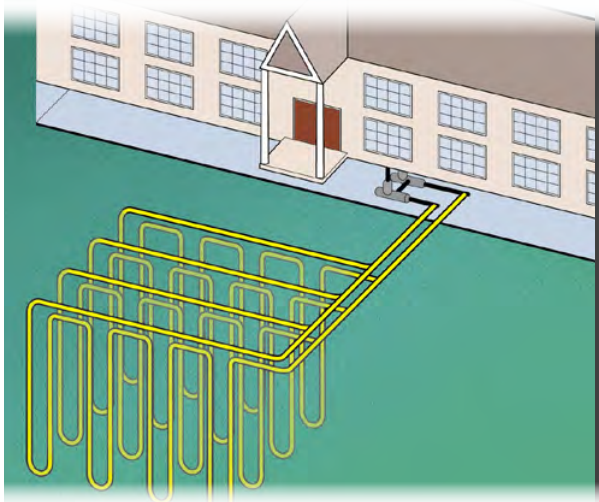


# CSI KNOXVILLE CHAPTER MEETING TUESDAY, JANUARY 14TH

## GEOHERMAL HVAC SYSTEMS FOR ARCHITECTS

Presented By: **Gary Bergeron**, Principal and Co-Owner Kelso-Regen Associates, Inc.  
(865) 748-6304 [gary@kelso-regen.com](mailto:gary@kelso-regen.com)

**1LU  
HSW**



## CALHOUN'S ON THE TENNESSEE RIVER

400 Neyland Drive  
Knoxville, TN 37902  
(865) 673-3355

Our Chapter meetings are generally on the 2<sup>nd</sup> Tuesday of each month and are at Calhoun's on the River in one of the upstairs meeting rooms.



Lunch  
Seminar

11:30 am  
12:00 pm

\$0 CSI Members  
\$0 First-Time Guest  
\$20 Returning Guest/  
Non-Members

Please RSVP to [csiknox@gmail.com](mailto:csiknox@gmail.com) by 3:00 pm on Monday, January 13th, 2020

ORGANIZED SEPTEMBER 1958 - CHARTERED MAY 1959

THE KNOXVILLE CHAPTER MEETS ON THE SECOND TUESDAY OF EVERY MONTH. GUESTS ARE WELCOME!



**CSI KNOXVILLE IS A  
MEMBER OF THE CSI  
GULF STATES REGION**

## THE SPECK Editor

Stacy Flick Colbaugh - Editor  
[scolbaugh@lewisgroup.net](mailto:scolbaugh@lewisgroup.net)

THE SPECK is published monthly by the Knoxville Chapter of the Construction Specifications Institute. Readers are encouraged to submit articles and images of the construction industry interest for our membership. All submittals should be sent via e-mail in a typical file format, such as .pdf, .docx, or .jpg. Please verify the accuracy of the information such as correct dates, spelling, and grammar. Deadlines are the 25th of each month.



### KNOXVILLE CHAPTER: JANUARY 2020

**54 PROFESSIONAL**

**1 EMERGING PROFESSIONAL**

**2 STUDENT**

**2 EMERITUS**

**2 RETIRED**

**61 TOTAL**



## CALENDAR OF EVENTS

### JANUARY 2020

- 07** **CSI Board Meeting** - Tuesday, January 7th  
Lunch meeting from 12:00 pm - 1:00 pm  
**Location: Lewis Group Architects**  
6512 Deane Hill Drive, Knoxville, TN 37919
- 14** **CSI Chapter Meeting** - Tuesday, January 14th  
**11:30 am** at Calhoun's on the River "**Geothermal HVAC Systems for Architects**" Presented by Gary Bergeron of Kelso-Regen 1LU/HSW RSVP at [csiknox@gmail.com](mailto:csiknox@gmail.com)
- 25** **MEP Class for ARE Prep** - Saturday, January 25th  
**9:00 am to 5:00 pm** at Civil & Environmental Consultants' offices  
2704 Cherokee Farms Way, Suite 101  
Knoxville, TN 37920  
**Presented by Gary Bergeron**  
Registration link:  
<http://events.constantcontact.com/register/>

### FEBRUARY 2020

- 04** **CSI Board Meeting** - Tuesday, February 4th,  
Lunch meeting from 12:00 pm - 1:00 pm  
**Location: Lewis Group Architects**  
6512 Deane Hill Drive, Knoxville, TN 37919
- 11** **CSI Chapter Meeting** - Tuesday, February 11th,  
**11:30 am** at Calhoun's on the River

## EAST TENNESSEE BUILDING PRODUCTS SHOW

Tuesday  
**MARCH  
10**

**SAVE  
THE  
DATE!**



## THE PRESIDENT'S MESSAGE

### HAPPY NEW YEAR!

Mr. Geoffrey Cavalier, CSI,  
Assoc. AIA, NCARB  
CSI Knoxville Chapter President  
[cavaliergeoffrey@gmail.com](mailto:cavaliergeoffrey@gmail.com)



Happy New Year! I hope that we all are recovering swiftly from the holidays. As much as I love the time off, time with friends and family, and good food, come January I am always ready to get back to my normal routine.

The annual CSI Product Show is Tuesday, March 10th. I hope you will be able to make it and it would be even better if you could bring a friend or even your whole office! If you would like to have a booth, please contact Josh Brock at [joshua.brick@generalshale.com](mailto:joshua.brick@generalshale.com)

The CSI board is constantly thinking about presentations and guest speakers for our many events. We have no shortage of ideas or people lined up to speak to CSI's members, but we always try to maximize the quality of our presentations. We want you to learn something new, whether it be about something you already are a master at, an entirely new subject, and of course everything in between. It can be about construction, design, business, government, or anything else that we think can help you improve in the construction industry. By giving you the resources to improve your career, I believe it will help the whole industry.

If there is something you want to learn about, PLEASE let us know. Whether it be for a specific project or just curiosity, we want to know what you want to learn. We want to know what presentations you have liked in the past so that we can invite them back. I would like to ask you if there is something YOU could offer? What in your job are you good at? Is it roofing? Concrete? Project management? Bidding? Revit? If you have never considered having a presentation to share with CSI, and maybe others, start thinking now. If you have thought about it, maybe now is the time to write up an outline or even start the graphic portion of the presentation. If you already have a presentation, then contact us and let us know that you are interested in giving a presentation sometime this year. To me, CSI is about people in the construction industry getting together and sharing what they know. Every person in CSI knows a lot of things that I don't know, and I am always eager to learn something from you all!

## CSI MEMBER SPOTLIGHT

### WELCOME TO KNOXVILLE CSI – MIRELYS CALISE, CSI

A new face at our CSI meetings is designer Mirelys Calise, who has moved this past year from Orlando, Florida where she worked as a Senior Designer and Planner for HHCP International. Her architect husband, Richard, practices with Lose Design in West Knoxville.



Mirelys has her own multi-disciplinary firm – Calise Design Studios – where she offers architectural design, production services, furniture design, and digital arts. <http://www.calisedesignstudios.com> This talented woman has a broad range of experience that includes residential and commercial projects, urban design, infill projects, interior renovations, retail and office both here in the U.S. and internationally.

She has volunteered her graphic skills and expertise in marketing to help get the word out about the all that we are doing in the Knoxville Chapter. We were happy to have her join us for the Chapter Planning Meeting this summer. She already is volunteering her talents with the East TN Community Design Center and assisted in a recent charrette on the redesign of the commercial corridor of Alcoa Hwy.

As if this is not enough to keep her creative juices flowing, she is a pastry chef and crafts artist. There will be lots of volunteers to beta test those tasty treats. Welcome to Knoxville and welcome to the Knoxville CSI chapter. We are so glad that you chose East Tennessee as your new home.



#### **Mirelys Calise, CSI**

Designer/Owner

C: 407.619.8617

[mirelysc@calisedesignstudios.com](mailto:mirelysc@calisedesignstudios.com)

[www.calisedesignstudios.com](http://www.calisedesignstudios.com)

CALISE DESIGN STUDIOS, LLC





## PRESENTATION SUMMARY

### GEOTHERMAL HVAC SYSTEMS FOR ARCHITECTS

**Description:** An introduction to the basics of commercial geothermal heat pump systems. This presentation starts with an introduction to the basics of geothermal heat exchanger systems then presents some of the details of the heat exchanger and building systems, including the different types, how they work, and how they are installed. The presentation emphasizes the most popular type of system installation – vertical closed-loop systems – but covers all of the common types. The advantages and disadvantages of the different applications are also presented, as well as helpful tips and advice on system design, selection and installation.



**Learning Objective:** Participants should gain a better understanding of how geothermal heat pump systems operate, the various types of system choices and selection methods, and many details of the installation process for each type.

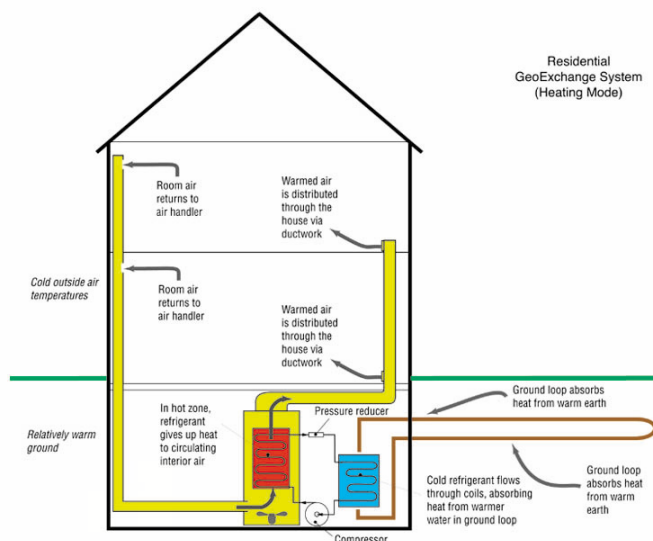
**Presentation:** The CES facilitator utilizes a PowerPoint presentation to provide viewers with excellent visual representations (pictures, charts, diagrams, etc.) and detailed commentary of the components and installation processes employed in geothermal heat pump systems. The facilitator will also allow time for questions to be answered during the presentation.

**A/V Needed:** A screen and electrical power. The facilitator provides the computer with the PowerPoint presentation and a digital projector.

**Target Audiences:** This presentation was developed with architects in mind, but would be educational for owners, general contractors, and other design professionals with limited geothermal HVAC experience.

**Facilitator Qualifications:** The CES facilitator has over 30 years experience in mechanical consulting engineering work and has designed systems in approximately 40 states. He has also attended the International Ground Source Heat Pump Association (IGSHPA) three day contractor training and has designed over two dozen commercial geothermal HVAC systems.

Gary started his career in 1984 as a mechanical designer with Assaf, Simoneaux & Tauzin Consulting Engineers in Baton Rouge, then moved on to Pruett & Ford Consulting Engineers in Augusta, Georgia. Johnson Controls Facility Management division lured Gary away from consulting engineering where he was the manager of a 90-person maintenance and repair department of 1400 buildings at the US Army's Fort Gordon base for approximately two years. Once in Knoxville, Gary worked for Albert Bedinger Engineers for four years then accepted a position with Kelso-Regen & Associates in the spring of 1995, where today he is co-owner of the firm. Gary attended the International Ground Source Heat Pump Association (IGSHPA) School in 1997 where he became a member of the association and also learned about the design and installation of geothermal heat pumps, piping and wellfields. He has been active in professional organizations such as the American Society of Plumbing Engineers (ASPE) and American Society of Heating, Refrigeration and Air conditioning Engineers (ASHRAE), having held several offices for ASPE, such as Vice President Technical and Vice President Education, and is currently serving on its Board of Directors as Vice President Technical for the third time. Gary is also a member of the national Construction Specifications Institute (CSI) serving a two year term 2015-2017 as CSI Knoxville chapter president and is the 2017 recipient of the CSI national Robert P. Brosseau award along with the 2018 Gulf States Region Eugene Wetzel award. Gary is also a local chapter member of the US Green Building Council (USGBC). The Architectural Registration Exam MEP review has been presented by Gary in Memphis, Chattanooga, and Knoxville to emerging architectural professionals since 2012. He can be contacted via phone at the office at 865-588-5348, cell: 865-748-6304 or via e-mail at [gary@kelso-regen.com](mailto:gary@kelso-regen.com).



## CSI TECHNICAL

# WHAT I LEARNED FROM CSI... FEELING UPTIGHT? GET SOME AIR!

**MR GARY T. BERGERON, CSI**  
Kelso-Regen Associates, Inc.  
CSI Knoxville Technical Chair  
[gary@kelso-regen.com](mailto:gary@kelso-regen.com)



We all look forward to a cozy wood burning fireplace when cold weather hits our area. Fireplace construction technology has not radically changed since Rumford introduced his fireplace design in the late 1790's. But today's tightly constructed homes require some considerations to make a conventional wood burning fireplace burn correctly and not result in a smoke-filled home.

The Brick Industry Association includes several details on residential fireplace design, published in 1983, using Rumford fireplace concepts. One of the most important ideas in the attached fireplace detail is the use of an outdoor air intake to provide combustion air. If an air path is not provided as part of the fireplace construction, the combustion air will be drawn from the room containing the fireplace. Additionally, if the volume of the room is not large enough, the air will instead draw through the cracks alongside the doors and windows. The cold air drawn from around the doors and windows will cause uncomfortable air drafts on the people in front of the fireplace. If enough combustion air cannot be provided, the fireplace will backdraft and smoke will fill the room.

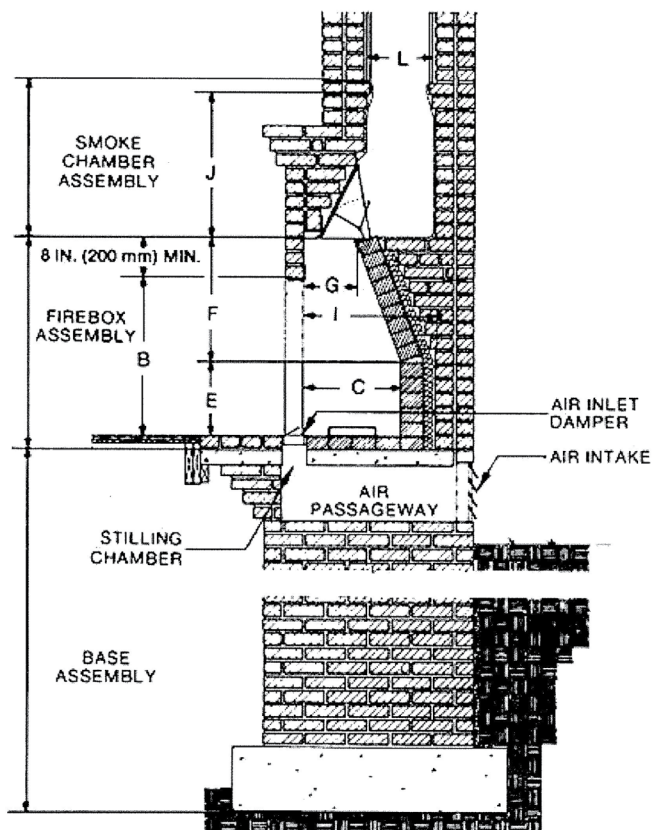


Exterior of house with chimney



Chimney cap with three fireplace flues

A recent project involved a one-year old house with three fireplaces. One fireplace was on the main floor; the second was in the basement; and the third was in the exterior patio. All flues used the same chimney structure with an attractive copper chimney cap covering all three flues. The owner would start a fire in the main floor and the smoke would go up the flue and back down the basement fireplace flue; filling the house with smoke, even with the basement fireplace damper closed. The tightly constructed house did not have an outdoor air intake in any of the fireplaces. In short, the

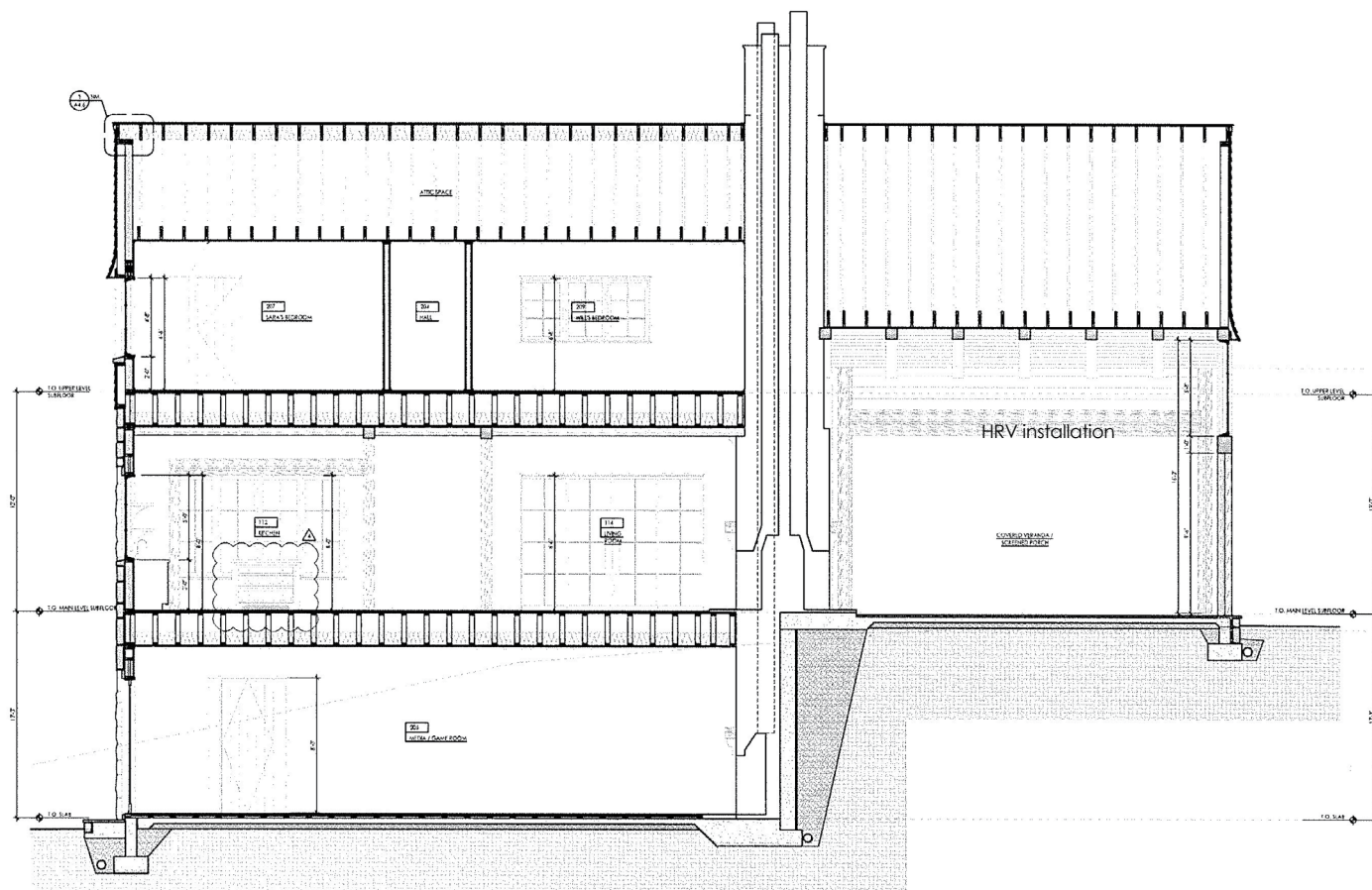
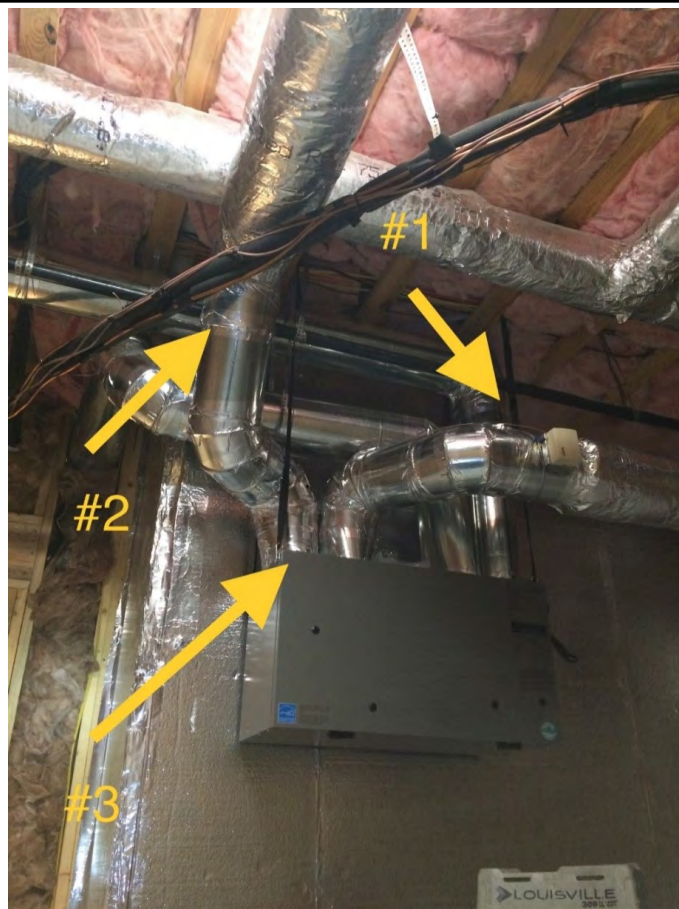


Brick Industry fireplace construction detail



main floor fireplace used the basement fireplace flue as the combustion air path and drew smoke down with the combustion air.

Several options were evaluated to resolve the smoking fireplace problem. One was a chimney cap induction fan for each flue. This option would require re-working of the chimney cap and installing an unsightly electrical conduit for each fan. Another option was to re-work the fireplaces to include an outdoor air intake. This would require reworking the stone and mortar which is difficult to match. A third option included installing a chimney cap damper, but this would require re-working the single-piece copper cap. The last, and successful, option was to utilize an Energy Recovery Ventilator/Heat Recovery Ventilator (ERV/HRV) to provide a dedicated combustion air path and pressurize the structure. Measurements via a blower door test revealed the need for a 200 Cubic Feet per Minute (CFM) HRV unit. The HRV was connected to a 4 inch x 12 inch outside air and relief air louver. As shown in the attached HRV diagram, it was installed in an exterior wall and connected to the return air duct of the basement HVAC unit. After the HVAC contractor completed this installation, the owner reported the following:



I've burned all fireplaces with the flues both open and shut. We have also burned multiple fires at once. There have been no issues and the problem seems to be solved. I've been in this house for a year and this is literally the first time we have been able to enjoy the fireplaces. I can't thank all of you enough for a concerted effort in solving this problem.

If you have an interesting construction or design related issue, come to the next CSI meeting to discuss it with other industry professionals.

#### Sources

<https://www.homeenergy.org/show/article/nav/heating/page/7/id/1075>

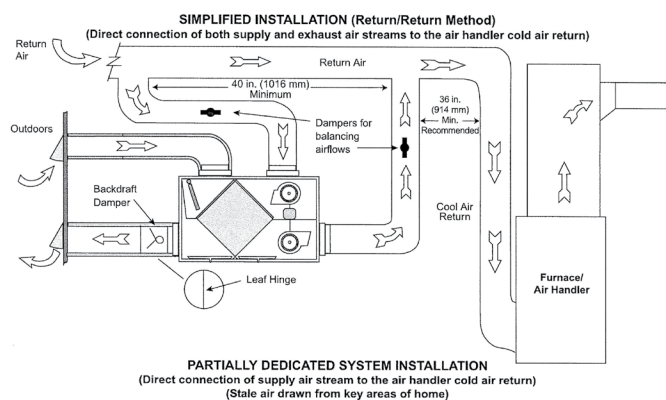
<http://www.gobrick.com/docs/default-source/read-research-documents/technicalnotes/19-residential-fireplace-design.pdf?sfvrsn=0>

<https://chimneysweeponline.com/hooa.htm>

<http://heatkit.com/docs/airreq.PDF>

<https://www.woodlanddirect.com/Chimney/Top-Sealing-Chimney-Dampers?state=20711>

#### TYPICAL SYSTEM APPLICATIONS



HRV installation diagram

**Gary T. Bergeron**  
Principal and Co-Owner  
Kelso-Regen Associates, Inc.  
Consulting Engineers  
201 Sherlake Lane, ste 101  
Knoxville, TN 37922  
CSI National Robert P. Brosseau Award 2017 recipient  
CSI Gulf States Region Technical chair, Wetzel Award Winner 2018  
O: 865-588-5348  
C: 865-748-6304  
<https://www.linkedin.com/in/garybergeron/>

## CSI EDUCATION

# MEP CLASS FOR ARE PREP!

Join Gary Bergeron, Vice-President of Kelso-Regen, for a day to learn about mechanical, electrical and plumbing systems to help with your ARE's. Gary brings great slides and lots of widgets to help you understand the in's and out's of these systems. HSW Credit is offered for each hour/topic! Plus, Gary will provide an authentic, Cajun lunch of home cooked Cajun Jambalaya and key lime pie for dessert.



The class will be covering the following topics:  
Energy overview and HVAC systems  
Plumbing systems  
Fire protection systems  
Electrical and Illumination systems  
Transportation systems  
Acoustics

You can register for this FREE study session

#### When:

Saturday, January 25, 2020  
from 9:00 am to 5:00 pm EST

#### Where:

Civil & Environmental Consultants' offices  
2704 Cherokee Farms Way  
Suite 101  
Knoxville, TN 37920

#### Contact:

Dale Powers  
AIA East Tennessee  
8656375003  
[compexec@aiaetn.org](mailto:compexec@aiaetn.org)

#### Register:

<https://events.r20.constantcontact.com/register/>





*March 10, 2020*

# East Tennessee Building Products Show

**3:30pm - 7:00pm**

**Foundry on The Fair Site  
747 World's Fair Park Dr  
Knoxville TN 37902**

**Bring your friends, learn what's  
new with our keynote speaker,  
eat, drink,  
and have a one on one with  
amazing product reps!**

Everyone in the Design and Construction Industry is invited to this free event!



## Keynote Speaker

**Ann McGauran**

Tennessee State Architect



Ann is an Architect with over 25 years of architectural, project management and real estate operations experience, primarily with large multi-facility institutions. Ann has served in a variety of real estate roles for the State of TN since 2013 and was unanimously appointed as State Architect by the Tennessee State Building Commission (SBC) in 2017. As the chief staff officer of the

SBC, Ann provides real estate expertise on capital projects and transactions affecting the States ~90 million sq. ft. and ~900, 000 acre portfolio. Ann graduated from Auburn University with a Bachelor of Architecture and received a Master's in Healthcare Management from Owen School of Business at Vanderbilt University. Ann is NCARB certified and earned her initial architectural licensure from Florida and is currently licensed in Tennessee.

Ann, her husband Mick and their two sons Sean and Liam, live in Nashville.

*March 10, 2020*

## East Tennessee Building Products Show

<b>Check in:</b>	<b>3:00 - 3:30 pm</b>
<b>Keynote Speaker:</b>	<b>3:30 - 5:00 pm</b>
<b>Exhibits</b>	<b>5:00 - 7:00 pm</b>
<b>Hors D'oeuvres</b>	<b>5:00 - 7:00 pm</b>
<b>Hosted Beer &amp; Wine Bar</b>	<b>5:00 - 6:30 pm</b>

<https://csiknoxville.org/>





## HINDSIGHT

### PHOTOS FROM **CSI HOLIDAY CELEBRATION** **AT RAMSEY HOUSE**

Photos by Stacy Colbaugh, CSI, CDT, AIA AND  
Mrs. Katherine Proctor, RA, FCSI, CDT





## HINDSIGHT

### PHOTOS FROM **CSI HOLIDAY CELEBRATION** AT **RAMSEY HOUSE**

Photos by Stacy Colbaugh, CSI, CDT, AIA AND  
Mrs. Katherine Proctor, RA, FCSI, CDT





## CSI EDUCATION

### ONE TEAM, ONE BUILD – DIFFERENT ROLES WORKING TOWARDS A COMMON GOAL

By Ms. Susan Davis, RA, CSI, CDT, PMP  
[babydavis111603@aol.com](mailto:babydavis111603@aol.com)

At CONSTRUCT 2019, Mike Young, FCSI, CCCA with the City and County of Denver gave a learning session on understanding the different roles of the project team.



If you don't work together, function will suffer.

Understand the actual conditions at the site. If you reference a standard, make sure you know what it says. Have you thought about constructability and biddability?

Design build can mean many things. Include in your team as many parties as possible. Remember the goal of the team is to deliver the facility.

To achieve a common goal, everyone needs to know their role and responsibilities.

The three factors of quality are Time. Money. Scope. You may have heard this called the three legged stool. But remember there are also two phases of quality: Quality Assurance - ensuring requirements WILL be fulfilled

Quality Control - ensuring requirements HAVE been fulfilled

Quality also exists on a timeline: Learn from the past. If you want something done right, allow the time needed in the present. For the future, anticipate how the space may be used in the future.

We usually think about initial cost. Why would you buy a \$500 car? The initial cost is low but what is the life cycle cost? When are you going to have to replace it? This may be something you have to educate the owner on but remember that is your responsibility.

The OWNER is the reason the project exists and sets the tone for the team. If the owner fosters competition, you will get a more combative team. Owner should decide who provides direction, decisions, and oversight.

Respect others  
Focus on strengths  
Appreciate others' roles  
Critique don't criticize

#### Owners:

Be honest about what is driving end date  
Learn the process  
Respect the schedule  
You get what you pay for- advise included  
Understand that the team should be paid  
Don't ask the contractor for the unfair or impossible

#### Designers:

Educate the owner  
Don't be optimistic  
Include contingency  
Be clear about what's in your scope  
Respect that it's not your money  
Assume that the owner cannot read plans  
Respond to RFIs and submittals  
Stay out of means and methods  
Don't offer opinion on if a change will cost  
Don't "help" subs  
Don't use general notes to cover mistakes  
Understand construction tolerances  
Be flexible but don't yield  
Research products and understand associated costs

#### Contractor:

Don't be optimistic  
Carry contingency  
Bad news doesn't get better with time  
Be open and honest  
Understand plans before asking questions  
Stay ahead  
Remember the owner has paid the designers for their time  
Respect the process  
Buyout in a timely manner

#### Suppliers:

Be open about new technology  
Educate about life cycle costs, pros and cons  
What are product limitations

You are a member of a team!

What I love about CSI is that all of these parties are recognized as being an equal part of that team and we strive to all work together and improve communication!

*Ms. Susan Davis, RA, CSI,  
CDT, PMP  
CSI Knoxville Chair: Bylaws  
and Operating Guide*



# CSI GULF STATES REGION LEADERS – 2019-2020

## CSI GULF STATES REGION OFFICERS AND COMMITTEES

### OFFICERS

#### PRESIDENT

Suzan Jordon, CSI, CDT  
865-389-9476  
[Suzanwjordan@yahoo.com](mailto:Suzanwjordan@yahoo.com)

#### VICE PRESIDENT

Cindi Brooks, CSI, CDT  
423-827-4848  
[cindibrooksgsr@gmail.com](mailto:cindibrooksgsr@gmail.com)

#### SECRETARY

Mike Zielinski  
901-652-5612  
[mzielinski@lrk.com](mailto:mzielinski@lrk.com)

#### TREASURER

Randall Lewis, AIA, CSI (2nd Yr.)  
601-948-4601  
[rlewis@jhharchitects.com](mailto:rlewis@jhharchitects.com)

#### IMMEDIATE PAST PRESIDENT

Bruce Martin, CSI, CDT, RRC  
423-634-9959  
[bmartin@dillardconstruction.com](mailto:bmartin@dillardconstruction.com)

#### INSTITUTE DIRECTOR - GULF STATES REGION

William Sundquist, CSI  
423-385-4598  
[wsundquist@wgpaver.com](mailto:wsundquist@wgpaver.com)

### COMMITTEES

#### ACADEMIC AFFAIRS

Kent Kile, CSI, CCPR (1st Yr.)  
615-347-4572  
[kkile@ppg.com](mailto:kkile@ppg.com)

#### AWARDS

Betina Latiker (1st Yr.)  
601-209-4671  
[blatiker@hotmail.com](mailto:blatiker@hotmail.com)

#### CERTIFICATION

Floyd Sterling, FCSI, CDT (2nd Yr.)  
318-226-0056  
[fsterling@shreveland.com](mailto:fsterling@shreveland.com)

#### EDUCATION

Kent Kile, FCSI, CCPR (2nd Yr.)  
615-347-4572  
[kkile@ppg.com](mailto:kkile@ppg.com)

#### ELECTRONIC COMMUNICATIONS

Randall Lewis, CSI, AIA  
601-948-4601  
[rlewis@jhharchitects.com](mailto:rlewis@jhharchitects.com)

#### FINANCE

Ryan Hatler, CSI, J.D (2nd Yr.)  
850-316-7217  
[ryan@hatlerlaw.com](mailto:ryan@hatlerlaw.com)

#### FUND RAISING / PRODUCT SHOWS

Melanie Kenney (2nd Yr.)  
615-979-9497  
[mkenney@southlandbrickandblock.com](mailto:mkenney@southlandbrickandblock.com)

#### MEMBERSHIP

Jill Colby, MBA, CSI, AIA (2nd Yr.)  
615-330-2746  
[jillcolby@colbyassoc.com](mailto:jillcolby@colbyassoc.com)

#### OPERATING GUIDE

Cindi Brooks, CSI, CDT (2nd Yr.)  
423-827-4848  
[cindibrooksgsr@gmail.com](mailto:cindibrooksgsr@gmail.com)

#### PLANNING

Billy Mathis, FCSI, CDT (2nd Yr.)  
501-758-7443  
[bjmathis@taggarch.com](mailto:bjmathis@taggarch.com)

#### PUBLICATIONS

John Dunaway, CSI, CCS, AIA (5th Yr.)  
601-948-7337  
[john@ccdarchitects.com](mailto:john@ccdarchitects.com)

#### TECHNICAL

Gary Bergeron, BS, CSI, ASHRAE,  
ASPE, USGBC (5th Yr.)  
865-588-5348  
[gary@kelso-regen.com](mailto:gary@kelso-regen.com)

#### SPECIFICATION COMPETITION

Thomas Clarke, FCSI, CCS,  
CCPR, CCCA, SCIP (2nd Yr.)  
601-832-5339  
[tlcfcsi@aol.com](mailto:tlcfcsi@aol.com)

#### NOMINATING

Suzan Jordon, CSI, CDT  
865-389-9476  
[suzanwjordan@yahoo.com](mailto:suzanwjordan@yahoo.com)





# CSI KNOXVILLE MEMBERS – JANUARY 2020

Aubrey Bader, CSI-S  
Mrs. Michelle Barillaro, CSI  
Mr. Gary Bergeron, BS, CSI, ASHRAE, ASPE, USGBC  
Sharon Braden, CSI  
Elizabeth Brandel, CSI  
Mr. Benjamin Brewer, BA, CSI, CCCA, CDT, AIA, CCA, NCARB  
Mr. Josh Brock, CSI  
Ms. Deborah Brooks, CSI  
Patrick Brown, CSI  
Mr. Carl Bryant, CSI  
Josh Buchanan, CSI-EP  
James Cain, CSI  
Mrs. Mirelys Calise, CSI  
Mr. Geoffrey Cavalier, CSI, Assoc. AIA, NCARB  
Ms. Stacy Colbaugh, CSI, CDT, AIA  
Jill Colby, MBA, CSI, AIA  
Ms. Patricia Corbitt, CSI  
Ms. Donna Covert, CSI, CDT  
Mr. Paul Crow, CSI  
Ms. Susan Davis, RA, CSI, CDT, PMP  
William Dunklin, RA, CSI, NCARB  
Mr. Dale Dunlap, CSI  
Kari Essary, CSI-S  
Mr. Jason Estes, CSI  
Mr. Joseph Fielden, CSI  
Kathryn Fuller, CSI, CDT, AIA, NCARB  
Tom Gillooly, CSI  
Ms. Alisha Gotham, CSI, CDT

Mr. Gordon Heins III, CSI  
Suzan Jordan, CSI, CCPR, CDT  
Whitney Kaul, CSI, LEED GA  
Kent Kile, FCSI, CCPR, CDT  
Mrs. Leslie Kooman-Fawaz, CSI  
Dwight LeClair, CSI  
Stephen Littlefield, CSI  
Mr. Douglass Lowrie, CSI  
Mr. Charles Luttrell Jr., CSI  
Ms. Laura Marshall, CSI  
Mr. Marvin Martin, FCSI, Member Emeritus, CDT  
Mr. Billy Martin III, CSI  
Mr. R. Aaron Miller, CSI, CDT, AIA  
Mr. Matt Moore, MBA, CSI  
James Odle, CSI, CDT  
Mr. Paul Pierson, CSI, Member Emeritus  
Angela Prichard, CSI  
Mrs. Katherine Proctor, RA, FCSI, CDT  
Cody Rau, CSI, AIA  
Mr. Curtis Rolen, CSI  
Mr. James Rose, CSI  
Mr. Ricky Roth, BS, CSI  
John Sanders, CSI, FAIA, LEED AP, NCARB  
Paul Shamiyeh, CSI  
Mr. Samer Shatara, CSI, CDT  
Mr. Jeremy Shipp, RA, CSI, LEED AP  
Mr. Brian Sickles, CSI, CDT, AIA  
Mr. Jerry Smith, CSI  
Mr. Peter Tarbell, CSI  
Mr. William Trimble Jr., CSI  
Mr. James Vineyard, CSI  
Mr. Williams Whitt, CSI  
Mr. Brent Williams, CSI, CDT



## Membership has its benefits

Your CSI member benefits include generous discounts on CSI standards and formats such as ***MasterFormat 2016 Update***, as well as discounts on numerous resources to assist you in the preparation of specifications, as well as other construction documents.

**Not a CSI Member? Join Today!**  
Go to [www.csiknoxville.org](http://www.csiknoxville.org)

# 2019-2020 KNOXVILLE CHAPTER CSI LEADERS



## OFFICERS

President	Geoffrey Cavalier	<a href="mailto:cavaliergeoffrey@gmail.com">cavaliergeoffrey@gmail.com</a>	(615) 964-1260
President - Elect	Aaron Miller	<a href="mailto:amiller@mhmnc.com">amiller@mhmnc.com</a>	(865) 357-5646
Vice-President	Will Dunklin	<a href="mailto:wdunklin@gmail.com">wdunklin@gmail.com</a>	(865) 525-6322
Secretary	Kathryn Fuller	<a href="mailto:kathrynf@mbicompanies.com">kathrynf@mbicompanies.com</a>	(865) 584-0999
Treasurer	Whitney Kaul	<a href="mailto:whitneykaul@gmail.com">whitneykaul@gmail.com</a>	(865) 591-7732
Past President	Aaron Miller	<a href="mailto:amiller@mhmnc.com">amiller@mhmnc.com</a>	(865) 357-5646

## DIRECTORS

### 2019-2020

Suzan Jordan	<a href="mailto:iamswj@yahoo.com">iamswj@yahoo.com</a>	(865) 389-9476
Gary Bergeron	<a href="mailto:gary@kelso-regen.com">gary@kelso-regen.com</a>	(865) 748-6304
Brian Sickles	<a href="mailto:brian.sickles@ssainc.com">brian.sickles@ssainc.com</a>	(865) 867-7582

### 2019-2021

Kathy Proctor	<a href="mailto:ksp53@me.com">ksp53@me.com</a>	(865) 599-7783
Josh Brock	<a href="mailto:joshua.brock@generalshale.com">joshua.brock@generalshale.com</a>	(865) 388-1833
Josh Buchanan	<a href="mailto:josh@tnmarble.com">josh@tnmarble.com</a>	(865) 995-9500

## COMMITTEES

### Members Services

Membership	Samer Shatara	<a href="mailto:sshatara@denark.com">sshatara@denark.com</a>	(865) 388-3661
House	Suzan Jordan	<a href="mailto:iamswj@yahoo.com">iamswj@yahoo.com</a>	(865) 389-9476

### Education

Education / Programs	Will Dunklin	<a href="mailto:wdunklin@gmail.com">wdunklin@gmail.com</a>	(865) 525-6322
----------------------	--------------	--	----------------

### Student Chapter

President (Fall)	Aubrey Bader	<a href="mailto:abader@vols.utk.edu">abader@vols.utk.edu</a>	(704) 930-6110
President (Spring)	Kari Essary	<a href="mailto:kessary@vols.utk.edu">kessary@vols.utk.edu</a>	(850) 545-1746
Secretary			

### Recognition

Technical	Gary Bergeron	<a href="mailto:gary@kelso-regen.com">gary@kelso-regen.com</a>	(865) 748-6304
Certification			
Awards	Daniel Smith	<a href="mailto:dsmith@maston.construction">dsmith@maston.construction</a>	(865) 389-6691

### Communication

Publication/ Website	Stacy Flick Colbaugh	<a href="mailto:scolbaugh@lewisgroup.net">scolbaugh@lewisgroup.net</a>	(865) 599-3956
Publicity/ Marketing	Mirelys Calise	<a href="mailto:mirelysc@calisedesignstudios.com">mirelysc@calisedesignstudios.com</a>	(407) 619-8617
Faculty Advisor	James Rose	<a href="mailto:jrose18@utk.edu">jrose18@utk.edu</a>	(865) 719-0743
Academic Affairs	Gary Bergeron	<a href="mailto:gary@kelso-regen.com">gary@kelso-regen.com</a>	(865) 748-6304

### Fundraising

Product Show	Josh Brock	<a href="mailto:joshua.brock@generalshale.com">joshua.brock@generalshale.com</a>	(865) 388-1833
Product Show Co-Chair	John Hockensmith	<a href="mailto:jhockensmith@mhmnc.com">jhockensmith@mhmnc.com</a>	(865) 357-5485
Golf Tournament	Wes Crow	<a href="mailto:wcrow@johnsongalyon.com">wcrow@johnsongalyon.com</a>	(865) 770-0727
Golf Tournament Co-Chair	Josh Brock	<a href="mailto:joshua.brock@generalshale.com">joshua.brock@generalshale.com</a>	(865) 388-1833

### Chapter Administration

Planning / Historian	Kathy Proctor	<a href="mailto:ksp53@me.com">ksp53@me.com</a>	(865) 599-7783
Bylaws & Op Guide	Susan Davis	<a href="mailto:babydavis111603@aol.com">babydavis111603@aol.com</a>	(865) 271-7998