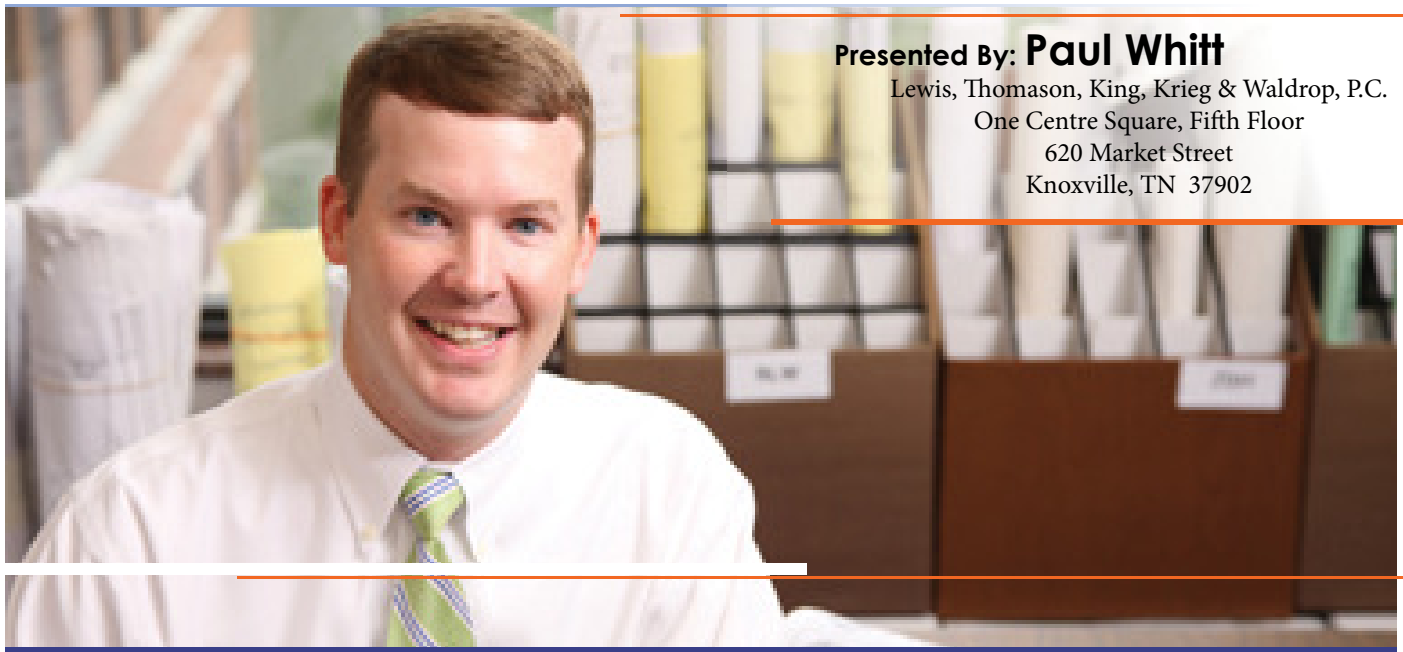




**KNOXVILLE CHAPTER MEETING  
TUESDAY, JANUARY 13TH, 2015**

## **CSI AND THE LAW: CONSTRUCTION DEFECTS**



**Presented By: Paul Whitt**

Lewis, Thomason, King, Krieg & Waldrop, P.C.  
One Centre Square, Fifth Floor  
620 Market Street  
Knoxville, TN 37902

## **CALHOUN'S ON THE TENNESSEE RIVER**

**400 Neyland Drive  
Knoxville, TN 37902  
(865) 673-3355**

Our evening meetings are generally on the 2<sup>nd</sup> Tuesday of each month and are at Calhoun's on the River in one of the upstairs meeting rooms.



Please RSVP to [csiknox@gmail.com](mailto:csiknox@gmail.com)

|         |                                 |
|---------|---------------------------------|
| Social  | 5:30 pm                         |
| Dinner  | 6:00 pm                         |
| Seminar | 7:00 pm                         |
| \$0     | CSI Members                     |
| \$0     | First-Time Guest                |
| \$20    | Returning Guest/<br>Non-Members |

ORGANIZED SEPTEMBER 1958 - CHARTERED MAY 1959

**THE KNOXVILLE CHAPTER MEETS ON THE SECOND TUESDAY OF EVERY MONTH. GUESTS ARE WELCOME!**



**CSI KNOXVILLE IS A MEMBER OF THE CSI GULF STATES REGION**

## THE SPECK Editor

Stacy Flick Colbaugh - Editor  
[scolbaugh@lewisgroup.net](mailto:scolbaugh@lewisgroup.net)

THE SPECK is published monthly by the Knoxville Chapter of the Construction Specifications Institute. Readers are encouraged to submit articles and images of the construction industry interest for our membership. All submittals should be sent via e-mail, in the following formats: PDF, RTF, TIFF, JPEG, DWG, BMP, EPS, & DOC. Deadlines are the 25th of each month.



Don't forget! You can now access The Construction Specifier for free online at [www.constructionspecifier.com](http://www.constructionspecifier.com).

### KNOXVILLE CHAPTER: JANUARY 2015

**2 PROFESSIONAL RETIRED**  
**2 PROFESSIONAL EMERITUS**  
**21 STUDENT**  
**53 PROFESSIONAL**  
**78 TOTAL**



## CALENDAR OF EVENTS

### JANUARY 2015

- 06** **CSI Board Meeting** - Tuesday, January 6th, 2015 at 5:30 pm at Odle & Young's Office
- 13** **CSI Chapter Meeting** - Tuesday, January 13th, 2015 at 5:30 pm at Calhoun's on the River.  
 Guest Speaker: Paul Whitt, Lewis Thomason.

### FEBRUARY 2015

- 03** **CSI Board Meeting** - Tuesday, February 3rd, 2015 at 5:30 pm at Odle & Young's Office
- 10** **CSI Chapter Meeting** - Tuesday, February 10th, 2015 at 5:30 pm at Calhoun's on the River.  
 Guest Speaker: TBD

### MARCH 2015

- 03** **CSI Board Meeting** - Tuesday, March 3rd, 2015 at 5:30 pm at Odle & Young's Office
- 10** **CSI Product Show** - Tuesday, March 10th, 2015 at Crowne Plaza Downtown Knoxville, TN



## THE PRESIDENT'S MESSAGE

### WHAT I LEARNED FROM CSI

**MR GARY T. BERGERON, CSI**  
**Kelso-Regen Associates, Inc.**  
**CSI Knoxville Chapter President**  
[gary@kelso-regen.com](mailto:gary@kelso-regen.com)



I hope everyone had a Merry Christmas, Happy Holidays and a Safe and Happy New Year 2015!!

All of us has had one of those school projects where you did not know where to begin.... Our Knoxville CSI student chapter has become a "forum to get answers".

I attended one of the recent CSI student chapter meetings where Tyler Rasnick was working on a water Kiosk for some of the disadvantaged people in Appalachia VA. When I mentioned that mechanical engineers also designed plumbing systems, Tyler asked if I had any contacts in the bottled water industry. I did not have a contact in the bottled water industry, but I did know someone who knew the president at Aqua Chem who is a global producer of water solutions here in Knoxville. We were able to arrange an introduction via email to president David Gensterblum and two of his technical people Dwight Warnock, Director of Engineering, and Bob Maravich, chief technical officer. Tyler met with these very helpful people to assist him with his project.

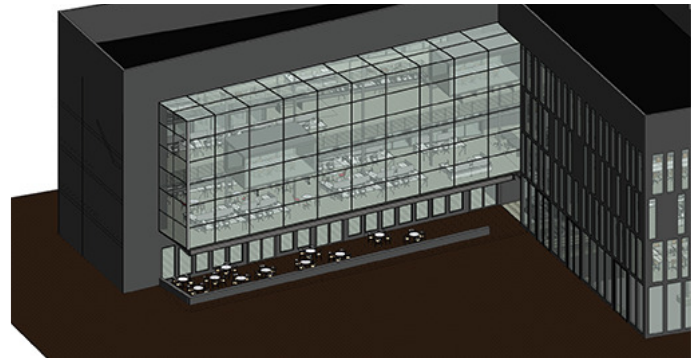
I also recently did a guest lecture for the Architecture 431 HVAC integration class. A young architecture student named Mary Catherine Kuntz had a project with a significant amount of glass curtain wall system. She also had a conference room "pop out" within the large expanse of glass. As a mechanical engineer, all I could see was the difficult HVAC system connection since the conference room was glass walls, glass ceiling and the only solid surface was the floor.....

Kent Kile & PPG came to the rescue again and sent her questions about glass curtain walls to Patrick Thornton the PPG National Architectural Manager who gave her some great advice....

First, PPG is not a design entity however as long as the comments are only taken as suggestions or thought provoking ideas then offer the following.

The limitations that may exist for the glass sizes would be affected by the several factors. The main factors would be; wind loading requirements, framing systems, support method, thickness of glass and heat treatment options for the glass. All the different variables would dictate the glass size. The framing system would more than likely

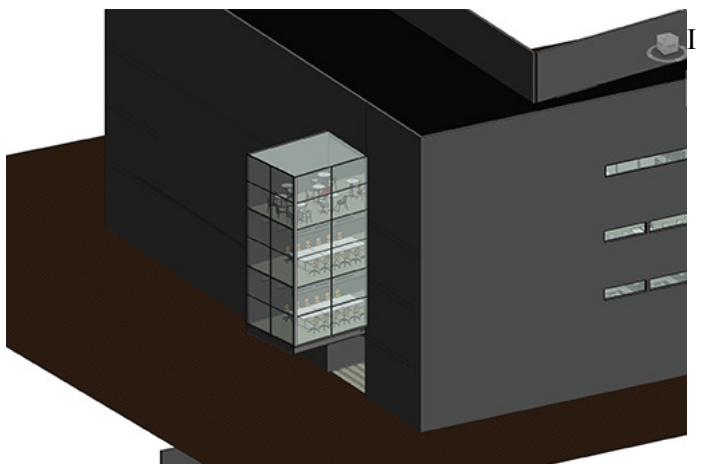
have to be quite extensive to ensure proper support of the structure if any of the glass should break. Remember that glass should never be used as a supporting structure since it will break.



Kent Kile's advice was

As far as a glazing type, there are several different systems you might want to consider:

1. Solarban R100/ Optigray/ clear would give you a good SHGC number and minimize internal glare. Interior shading devices may still be needed also.
2. Solarban 60/Clear/Clear would give you the best VLT, but you would most likely need a shading device- mini blinds or curtains to make the occupied spaces more comfortable when there is full sun on the building.
3. If a green glass meets with your aesthetics, Solexia or one of our Oceans of Color green/ blue-green glasses coupled with Solarban R100, 60 or 70 might make for a good choice. Visit [www.ppgideascape.com](http://www.ppgideascape.com) and click on the glass option to get our most current products and calculator information. My best to you with your project.



encourage everyone to come to the monthly meetings to meet our CSI student chapter students, learn something new, meet your fellow construction industry people, and to have fun at our meetings with some great ice breaker games.

**MR GARY T. BERGERON, CSI**  
**Kelso-Regen Associates, Inc.**  
**CSI Knoxville Chapter President**  
[gary@kelso-regen.com](mailto:gary@kelso-regen.com)







**Construction Defects:** The presentation will include a discussion of the types of issues, claims, and damages involved in construction defect litigation. It will also provide a discussion of specific examples of construction failures and ensuing litigation.



LEWIS THOMASON

**W. Paul Whitt, Esq.** (Paul) is an associate with Lewis, Thomason, King, Krieg & Waldrop, P.C. in the firm's construction law practice group. Paul concentrates his practice in the areas of construction law and litigation, including professional liability defense of design professionals, engineers, architects and surveyors, as well as professional liability representation of accountants and lawyers. Paul also has significant experience representing insurance carriers in first-party actions brought by insureds related to coverage matters, claims of bad faith, insurance fraud and other extra-contractual matters, as well as experience in general civil litigation.

In 2008, Paul was awarded the Tennessee Bar Association-Young Lawyers Division President's Award for his work as the chair of the Wills for Heroes Committee, which developed, organized and implemented a statewide program for the provision of free estate planning services to first responders and

their families across the State of Tennessee. He has also served as an adjunct instructor for Business Law at Union University. Paul earned his B.S.B.A. from Union University in 2001 and his J.D., *cum laude*, from the University of South Carolina in 2005.


Lewis, Thomason, King, Krieg & Waldrop, P.C. (Lewis, Thomason) is comprised of over 80 lawyers providing its clients with a diversified pool of legal expertise, including a specialized Construction Law Practice Group, with offices located in Knoxville, Nashville, and Memphis. Lewis, Thomason formed in January 2014 when two longstanding firms, Lewis, King, Krieg & Waldrop, P.C. (founded in 1960) and Thomason, Hendrix, Harvey, Johnson & Mitchell (founded in 1967), merged to form one of the largest statewide firms in Tennessee.

[www.lewisthomason.com](http://www.lewisthomason.com)



***Presented by:*** LEWIS, THOMASON, KING, KRIEG & WALDROP, P.C.





If it's worth building,  
it's worth protecting.

**Darson Buckner, CSI, CDT  
LEED Green Associate  
Dealers Warehouse Corporation  
DuPont Tyvek Senior Certified  
Weatherization Specialist  
865-556-3140  
darsonbuckner@hotmail.com**

### **The forecast calls for Tyvek®.**

Nothing threatens the structural integrity of a building like unwanted water and moisture. That's why intelligent moisture management is so critical to sound design and construction. And why more architects now protect their projects with DuPont™ Tyvek® CommercialWrap®.

Tyvek® CommercialWrap® was engineered specifically to help protect exterior wall systems in today's higher-value light commercial construction. It's up to 300% better at bulk water holdout than conventional building papers. And because Tyvek® breathes, it helps allow moisture vapor molecules to escape the wall cavity. So walls stay dryer.

You can't do anything about the weather. But you can prepare for it, with Tyvek®. Find out more at 1-800-44-TYVEK® or [www.TYVEK.com](http://www.TYVEK.com).

© Copyright 2003 E.I. du Pont de Nemours and Company. Tyvek® is a registered trademark of DuPont for its brand of protective material. All rights reserved.

**Tougher, stronger,  
higher-performance**

DuPont™  
**Tyvek®**  
COMMERCIALWRAP®



*The miracles of science™*







## CSI AND THE LAW BIM: The Recap

W. Paul Whitt  
Lewis, Thomason, King, Krieg  
& Waldrop, P.C.  
One Centre Square, Fifth Floor  
620 Market Street  
Knoxville, TN 37902



LEWIS THOMASON

*Author's Note:* This column will be reviving a column that our firm has provided to CSI in the past. Our intent will be to provide a monthly short discussion of some aspect of construction and the law that may be useful and/or helpful to you. We hope that you enjoy it.

Our firm recently conducted a series of presentations on Building Information Modeling (“**BIM**”) to the Knoxville construction industry, with David Draper presenting at the CSI August 2014 meeting and with the attorneys from the Construction Practice Group at our firm presenting a seminar on BIM on September 19th. As a way to wrap up this recent treatment of BIM and its impact on the construction industry, we offer the following takeaways on this topic:

- BIM is a 3-dimensional representation of a building from which the plans, sections, elevations, perspectives, spreadsheets, and other output useful to the realization of a design are created. It is a shared knowledge resource for information about the facility during design, construction, use and maintenance of the facility. Virtual Design and Construction (“**VDC**”) is the process of using BIM models in planning, design and construction.
- The major advantages of BIM for owners include: Early visualization of the project; Better analysis of constructability; More efficient/less expensive construction; Forecast and manage long-term maintenance and utilities costs; and communicate with owner’s facility management software.
- Contractors are using BIM in the following manners: Performing more accurate estimating; Simulating work sequences to improve scheduling; Coordinate movement of labor and materials to avoid delay; Identify and resolve clashes between materials and equipment installed by different trades; and Identify areas where potential safety concerns exist due to the work being performed or the status of the work.
- Projects involving BIM will require additional attention to the contract provisions to address issues such as the following: The allowable level of reliance on the BIM model in implementing the project design; Identification of an information manager responsible for maintaining and securing the BIM model; Allocation of risk among the participants with respect to the use of the BIM model; and Treatment of intellectual property issues involving the BIM model.
- Participation in a BIM related project, especially for contractors, creates potential additional risks, including the potential that the contractor might be viewed as having participated in and/or performed design related services during the development of the BIM model to the extent the contractor is supplying information and/or accessing the BIM model to add, delete or alter information in the BIM model. As most insurance policies maintained by contractors (typically, a Commercial General Liability insurance policy) do not cover design services performed by the contractor, additional attention must be paid to the coverage carried by the contractor. It will likely be the case that securing an additional professional liability policy will be needed in order to fill the potential coverage “gap” for potential design services performed by the contractor with respect to the BIM model.

In the end, BIM is likely to become more prevalent in the construction industry in our region—as it appears to be headed in that direction already. It may also be that utilization of BIM on projects will become an issue of “standard of care” as BIM becomes more prevalent. Therefore, it is wise for construction industry participants to become aware of the nature of BIM and its related benefits and risks—and prepare themselves to effectively implement their respective disciplines in BIM related projects, and also protect themselves from potential contractual and liability risks associated with BIM.

# CEU

East TN City Center

I | I D | A  
INTERNATIONAL  
INTERIOR DESIGN  
ASSOCIATION

TENNESSEE CHAPTER

## The Ever Changing Workspace: Activity Based Design

Presented by: Julia Roberts, Kimball Office

Sponsored by:

commercial|environments inc.

**Program Overview:** The evolution of the office has been slow, yet fast depending on what it is compared to. Many factors have come to play that have overshadowed key principles & slowed the adoption of forward thinking ideas. Recent changes in the economy, real estate, technology, demographics, work-life balance & globalization, among others, have escalated the adoption of Activity Based Design. This CEU will clarify the What, Why & How to implement and begin with the end in mind.

### 1.0 Learning Unit – IDCEC, AIA self report

**Date:** January 22nd, 2015

**Time:** 11:30-12:00 Lunch  
12:00-1:00 Presentation

**Location:** Associated Builders & Contractors  
402 Bearden Park Circle

**Cost:** Members - Free  
Non Members - \$5.00  
(Cash or Check at the door please)

**RSVP:** Jan. 19th, [kellyreynolds@comenviro.com](mailto:kellyreynolds@comenviro.com)

**Reminder:** Do not forget to bring your IDCEC member number to the program.

# CSI MEETING MINUTES

## BOARD BRIEFS - DECEMBER 2, 2014

By Nancy Roberts, CSI, CDT

Edited by THE SPECK Editor, Stacy Colbaugh, CSI, CDT

### In Attendance:

Gary Bergeron, President  
 Leslie Fawaz, Treasurer  
 Nancy Roberts, Secretary  
 Samer Shatara, Past President  
 Will Dunklin, Director (2014-21060)  
 Suzan Jordan, Director (2014-2016)  
 Kathy Proctor, Director (2014-2016)  
 Jeremy Shipp, Chapter Education Chair  
 Jim Vineyard, Chapter Programs Chair  
 Daniel Smith, Chapter Awards Chair

These meeting minutes were recorded and are presented as understood by the Secretary, Nancy Roberts, and are outlined as follows:

The meeting was held at Odle & Young's Office and was called to order at 5:30 p.m. by Gary Bergeron. Meeting generally followed a meeting agenda provided by Gary in advance of the meeting.

### 1. Previous meeting minutes (attached)

The November 4, 2014 meeting minutes had been emailed to board members by Nancy Roberts.

### 2. Treasurer's report (attached)

The treasurer's report had been emailed to board members by Leslie Fawaz.

### 3. President report

Gulf States Region (GSR) conference was hosted by the Acadiana chapter on April 17 and 18 in Lafayette, LA; this will be the only time during the year when GSR will meet. CSI student chapter December meeting date to be determined in UTK Art and Architecture Building room 325. Gary spoke to Arch 431 HVAC integration class on November 11th and delivered ductulators for class use in duct sizing. Gary also reviewed Cleveland Hotel renovation project for Mary Beth Robinson's Interior Design class on November 12th.

### 4. President Elect Report

Lukas Salyer was unable to reach Mary Stonaker to obtain a copy of last year's product show flyer which could be used for edit purposes. In lieu of using that flyer, Lukas passed along the flyer and packet from 2013 Product Show to Josh Brock who is editing the packet for accurate dates and times. Lukas plans to send the markups to Leslie for revisions.

### 5. Vice President report – position currently vacant

Lukas Salyer is actively recruiting a member to serve as Vice President. Since time is approaching to nominate officers for next year, Gary appointed a nominating committee including himself, Jim Vineyard, Darson Buckner, and Lukas Salyer. The goals for the nominating committee are to prepare a roster for the January meeting and to be posted in the March newsletter in advance of the April meeting. Kathy Proctor and/or

Nancy will confirm Institute submittal deadline for chapter roster.

### 6. Board members/committee group reports

6.1 Member Services (membership, fun, and house) – Jim Odle, Director: Darson reported that new member program was in progress.

Suzan Jordan stated that announcement is forthcoming for this year's Christmas party at Samer's home on December 16th. In addition to collecting toys for the Toys for Tots campaign, caroling and wearing ugly sweaters will be on the party agenda.

6.2 Education (education, programs, and special programs) – Will Dunklin, Director: Jeremy Shipp submitted a report about education activities. Knox Heritage Lunch and Learn on December 3rd sponsored by Wasco at Westwood Mansion with 22 confirmed attendees. Ameristar Lunch and Learn on January 3rd sponsored by Ameristar entitled "Perimeter Security" at East Tennessee Community Development Center (ETCDC). Big Ass Solutions Lunch and Learn on February 18th sponsored by Big Ass Solutions entitled "Air Movement for Energy-Efficient Comfort in Conditioned Spaces" at ETCDC. Polyisocyanurate Insulation Manufacturers Association with future presentation on Rigid Foam for Continuous Insulation System in Walls. Jim Vineyard stated that February speaker will be Suzan Jordan, Product Show will be held in March, and April speaker will be Pat Ezell, TVA historian. There was discussion that lunch and learns, as well as chapter meetings, should provide certificates for continuing professional development hours.

6.3 Recognition (technical, certification, and awards) – Donna Covert, Director: No report for BIM (formerly Revit) support group. Daniel Smith sent a message about upcoming award due dates: January 15th – Robert V. Bishop Award.

March 1st – twelve different awards and commendations. Daniel asked Suzan for input on January 15th Bishop Award wherein the chapter will nominate Stacy Colbaugh.

6.4 Communications (website, publication, and liaison) – Daniel Smith, Director: Suzan has updated the website. However, the Institute website will be down on November 11th for maintenance.

6.5 Fundraising (product show and golf tournament) – Kathy Proctor, Director: No report on Product Show besides the President Elect report. Golf tournament was a big success.

6.6 Chapter Administration (planning, historian, bylaws, and operating guide) – Suzan Jordan, Director: No report.

### 7. Calendar

No changes to calendar.

### 8. Old business

No old business.

### 9. New business

No new business.



The meeting was adjourned at approximately 6 p.m. Next board meeting will be January 6th.



# CSI LUNCH & LEARN: ARCHITECTURAL PERIMETER SECURITY ALTERNATIVES

Presented by H. Wayne Norman, Market Developer,  
Ameristar Perimeter Security USA Inc.

WEDNESDAY, JANUARY 21, 2015

LUNCH & NETWORKING: 11:30 A.M. – 12:00 P.M.

PRESENTATION: 12:00 P.M. – 1:00 P.M.



Hello CSI Members:

CSI Knoxville Chapter continues to offer you another learning opportunity provided by **Wayne Norman with Ameristar Perimeter Security USA Inc.** This presentation offers 1 Hour CEU and will outline the role of passive and active perimeter security barriers in an effective holistic approach to physical site security, and their recent developments. We welcome your attendance!

One key component to an effective physical site security program is establishing and maintaining the perimeter of a facility or asset. After identifying the assets of the facility, defining the anticipated threats, and assessing the vulnerabilities of a site, physical security

products and procedures can be installed and implemented to better achieve the protection objectives. Fences, walls, bollards, planters, pedestrian turnstiles, gates, vehicle barriers, guard booths, and access control systems establish the perimeter. These products can be integrated with sensors, cameras, lighting, and communication equipment to effectively deter, delay, deny, detect, and respond to threats. Recent product developments and procedures will be highlighted and discussed.

Please relay this invitation to any and all interested parties especially those in your work place. This is a great opportunity to network and learn something new as well as an opportunity to introduce your guest to CSI. We hope to see you there!

#### WHERE:

East Tennessee Community Design Center  
(ETCDC) WATE 6 Carriage House  
1300 N. Broadway, Knoxville, TN 37917

#### PARKING:

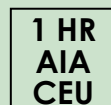
You should be able to find a parking space in the WATE parking lot. There also may be a parking space available along Luttrell St.

#### RSVP:

Attendance is limited. If you wish to participate, please respond to Jeremy Shipp at [shipp.arc@gmail.com](mailto:shipp.arc@gmail.com) with your name, email, and phone by Friday, January 16th.



1555 N Mingo Road  
Tulsa, OK 74116  
(866) 467-2773



# FY 2015 GSR Officers and Committee Chairs

## **PRESIDENT**

**William Sundquist, CSI**

Tel: 423-509-3627

Email: wsundquist2ortweinsign.com

## **VICE PRESIDENT**

**James Bagley, CSI, CCS, AIA**

Tel: 334-271-3200

Email: james.bagley@gmcnetwork.com

## **SECRETARY (2nd Yr.)**

**Cindi Brooks, CSI, CDT**

Tel: 423-305-2554

Email: cindibrooksgsr@gmail.com

## **TREASURER (1st Yr.)**

**Amy Fleming, CSI, CDT**

Tel: 423-267-2288

Email: afleming@triadelectriccorp.com

## **IMMEDIATE PAST PRESIDENT**

**Billy Mathis, CSI, CDT**

Tel: 501-758-7443

Email: bjmathis@taggarch.com

## **COMMITTEE CHAIRS**

### **ACADEMIC AFFAIRS (1st Yr.)**

**Kent Kile, CSI, CCPR**

Tel: 615-347-4572

Email: kkile@ppg.com

### **AWARDS (3rd Yr.)**

**Lantz Kuykendall, CSI, CDT**

Tel: 601-981-4677

Email: elkarch5@gmail.com

### **CERTIFICATION (1st Yr.)**

**Christopher Young, CSI, CCS**

Tel: 504-524-4634

Email: cjoy@blitchknevel.com

### **EDUCATION (1st Yr.)**

**Michael Sanders, CSI, CCS, CCCA**

Tel: 501-514-2791

Email: S2KMichael@conwaycorp.net

### **ELECTRONIC COMMUNICATIONS**

*(1st Yr.)*

**John Murray, CSI, CDT**

Tel: 601-948-7337

Email: jmurray@ccdarchitects.com

## **FINANCE (1st Yr.)**

**Randall Lewis, CSI, AIA**

Tel: 601-948-4601

Email: rlewis@jhharchitects.com

## **FUND RAISING/PRODUCT SHOWS (1st Yr.)**

**Floyd Sterling, CSI, CDT**

Tel: 318-226-0056

Email: fsterling@shreveband.com

## **MEMBERSHIP (1st Yr.)**

**Mike Davis, FCSI, CDT**

Tel: 423-421-4103

Email: mmd1300@epbfi.com

## **OPERATING GUIDE (2nd Yr.)**

**Cindi Brooks, CSI, CDT**

Tel: 423-305-2554

Email: cindibrooksgsr@gmail.com

## **PLANNING (1st Yr.)**

**Bruce Martin, CSI, CDT, RRC**

Tel: 423-775-1793

Email: bmartin@dillardconstruction.com

## **PUBLICATIONS (1st Yr.)**

**John Dunaway, CSI, CCS, AIA**

Tel: 601-948-7337

Email: john@ccdarchitects.com

## **TECHNICAL (1st Yr.)**

**Gary Bergeron, CSI, CCS**

Tel: 865-588-5348

Email: gary@kelso-regen.com

## **SPECIFICATION COMPETITION (1st Yr.)**

**Robert B. Swan, CSI, CCS, CCCA, AIA**

Tel: 504-586-9303

Email: rgswan1@earthlink.com

## **NOMINATING (1st Yr.)**

**James Bagley, CSI, CCS, AIA**

Tel: 334-271-3200

Email: james.bagley@gmcnetwork.com

## **GULF STATES REGION INSTITUTE DIRECTOR**

**JIMMY LAIL, CSI**

Tel: 423-265-0467

Email: jimmy@rainesbrothersinc.com



## KNOXVILLE CHAPTER CSI LEADERS – 2014-2015



### OFFICERS

---

|                 |               |  |              |
|-----------------|---------------|--|--------------|
| President       | Gary Bergeron | <a href="mailto:gary@kelso-regen.com">gary@kelso-regen.com</a>                   | 865-748-6304 |
| President-elect | Lukas Salyer  | <a href="mailto:lukas.salyer@generalshale.com">lukas.salyer@generalshale.com</a> | 865-388-1833 |
| Secretary       | Nancy Roberts | <a href="mailto:nrober10@utk.edu">nrober10@utk.edu</a>                           | 865-599-1632 |
| Treasurer       | Leslie Fawaz  | <a href="mailto:leslie@communitydc.org">leslie@communitydc.org</a>               | 865-748-7705 |
| Past President  | Samer Shatara | <a href="mailto:sshatara@denark.com">sshatara@denark.com</a>                     | 865-388-3611 |

### DIRECTORS

---

|             |               |  |              |
|-------------|---------------|--|--------------|
| 2014 - 2015 | Jim Odle      | <a href="mailto:j.odle.oyarch@comcast.net">j.odle.oyarch@comcast.net</a>                 | 865-803-4237 |
|             | Donna Covert  | <a href="mailto:covertarch@gmail.com">covertarch@gmail.com</a>                           | 865-310-9276 |
|             | Daniel Smith  | <a href="mailto:daniel.smith@odomconstruction.com">daniel.smith@odomconstruction.com</a> | 865-389-6691 |
| 2014 - 2016 | Will Dunklin  | <a href="mailto:will@williamdunklin.com">will@williamdunklin.com</a>                     | 865-525-6322 |
|             | Kathy Proctor | <a href="mailto:ksp53@me.com">ksp53@me.com</a>   | 865-599-7783 |
|             | Suzan Jordan  | <a href="mailto:suzanwjordan@icloud.com">suzanwjordan@icloud.com</a>                     | 865-389-9476 |

### COMMITTEES

---

|                               |                      |  |              |
|-------------------------------|----------------------|--|--------------|
| <b>Members Services</b>       |                      |  |              |
| Membership                    | Darson Buckner       | <a href="mailto:darsonbuckner@hotmail.com">darsonbuckner@hotmail.com</a>                 | 865-556-3140 |
| Fun/ House                    | Donna Covert         | <a href="mailto:donna.covert@gmail.com">donna.covert@gmail.com</a>                       | 865-310-9276 |
|                               | Suzan Jordan         | <a href="mailto:suzanwjordan@icloud.com">suzanwjordan@icloud.com</a>                     | 865-389-9476 |
| <b>Education</b>              |                      |  |              |
| Education                     | Jeremy Shipp         | <a href="mailto:shipp.arc@gmail.com">shipp.arc@gmail.com</a>                             | 423.506.0058 |
| Chapter Programs              | Jim Vineyard         | <a href="mailto:jbvineyard@tva.gov">jbvineyard@tva.gov</a>                               | 423-240-2481 |
| Accessibility                 | Gary Bergeron        | <a href="mailto:gary@kelso-regen.com">gary@kelso-regen.com</a>                           | 865-748-6304 |
| Student Chapter               |                      |  |              |
| Pres.                         | Geoffrey Cavalier    | <a href="mailto:gcavale@vols.utk.edu">gcavale@vols.utk.edu</a>                           | 615-964-1260 |
| Vice Pres.                    |                      |  |              |
| Secretary                     |                      |  |              |
| Treasurer                     |                      |  |              |
| <b>Recognition</b>            |                      |  |              |
| Technical                     | Will Dunklin         | <a href="mailto:will@williamdunklin.com">will@williamdunklin.com</a>                     | 865-525-6632 |
|                               | Jim Odle             | <a href="mailto:j.odle.oyarch@comcast.net">j.odle.oyarch@comcast.net</a>                 | 865-803-4237 |
| Certification                 | Paul Pierson         | <a href="mailto:paulpierson@comcast.net">paulpierson@comcast.net</a>                     | 865-560-0272 |
| Awards                        | Daniel Smith         | <a href="mailto:daniel.smith@odomconstruction.com">daniel.smith@odomconstruction.com</a> | 865-389-6691 |
| <b>Communication</b>          |                      |  |              |
| Website                       | Suzan Jordan         | <a href="mailto:suzanwjordan@icloud.com">suzanwjordan@icloud.com</a>                     | 865-389-9476 |
| Publication                   | Stacy Flick Colbaugh | <a href="mailto:scolbaugh@lewisgroup.net">scolbaugh@lewisgroup.net</a>                   | 865-584-5000 |
| Faculty Advisor               | James Rose           | <a href="mailto:jrose18@utk.edu">jrose18@utk.edu</a>                                     | 865-719-0743 |
| Academic Affairs              |                      |  |              |
| <b>Fundraising</b>            |                      |  |              |
| Product Show                  | Josh Brock           | <a href="mailto:Joshua.brock@generalshale.com">Joshua.brock@generalshale.com</a>         | 865-531-6203 |
| Golf Tournament               | Wes Crow             | <a href="mailto:wcrow@meritconstruction.com">wcrow@meritconstruction.com</a>             | 865-966-4100 |
|                               | Josh Brock           | <a href="mailto:Joshua.brock@generalshale.com">Joshua.brock@generalshale.com</a>         | 865-531-6203 |
| <b>Chapter Administration</b> |                      |  |              |
| Planning & Historian          | Kathy Proctor        | <a href="mailto:ksp53@me.com">ksp53@me.com</a>   | 865-599-7783 |
| Bylaws &                      | Nancy Roberts        | <a href="mailto:nrober10@utk.edu">nrober10@utk.edu</a>                                   | 865-599-1632 |
| Operating Guide               |                      |  |              |